

July 13, 2017

PRESS RELEASE

CONSTRUCTION STARTING UP ON THE WATERTOWN LOWER DAM

PROJECT: WATERTOWN LOWER DAM REHABILITATION PROJECT

The City of Watertown is under contract with Janke General Contractors, located in Athens, WI, to rehabilitate the Watertown Lower Dam located between the Main Street and Milwaukee Street bridges. The rehabilitation work includes, but not be limited to: installation of an impermeable geomembrane on the upstream face of the existing concrete gravity spillway; concrete surface repairs along the upstream and downstream faces of the concrete spillway, and cementitious injection grouting at the left abutment of the dam.

This work will be taking place over the next several months, with rehabilitation beginning in Mid-August and ending by the end of December. As part of the rehabilitation work, the Rock River between the two dams will be lowered as to accommodate the rehabilitation work.

The drawdown will be limited to the area between the Upper and Lower Dams (approximately 2.55 stream-miles) as shown in the figure on the following page. The total depth of the drawdown will vary with rain events. The maximum anticipated depth of drawdown is 6 feet (to EL. 802.50 ft. NGVD29 at the Lower Watertown Dam).

If you have any questions, please contact City Engineer, Jaynellen Holloway, at 920-262-4050. Times to call are: Monday – Friday, 8:00 a.m. – 4:30 p.m.

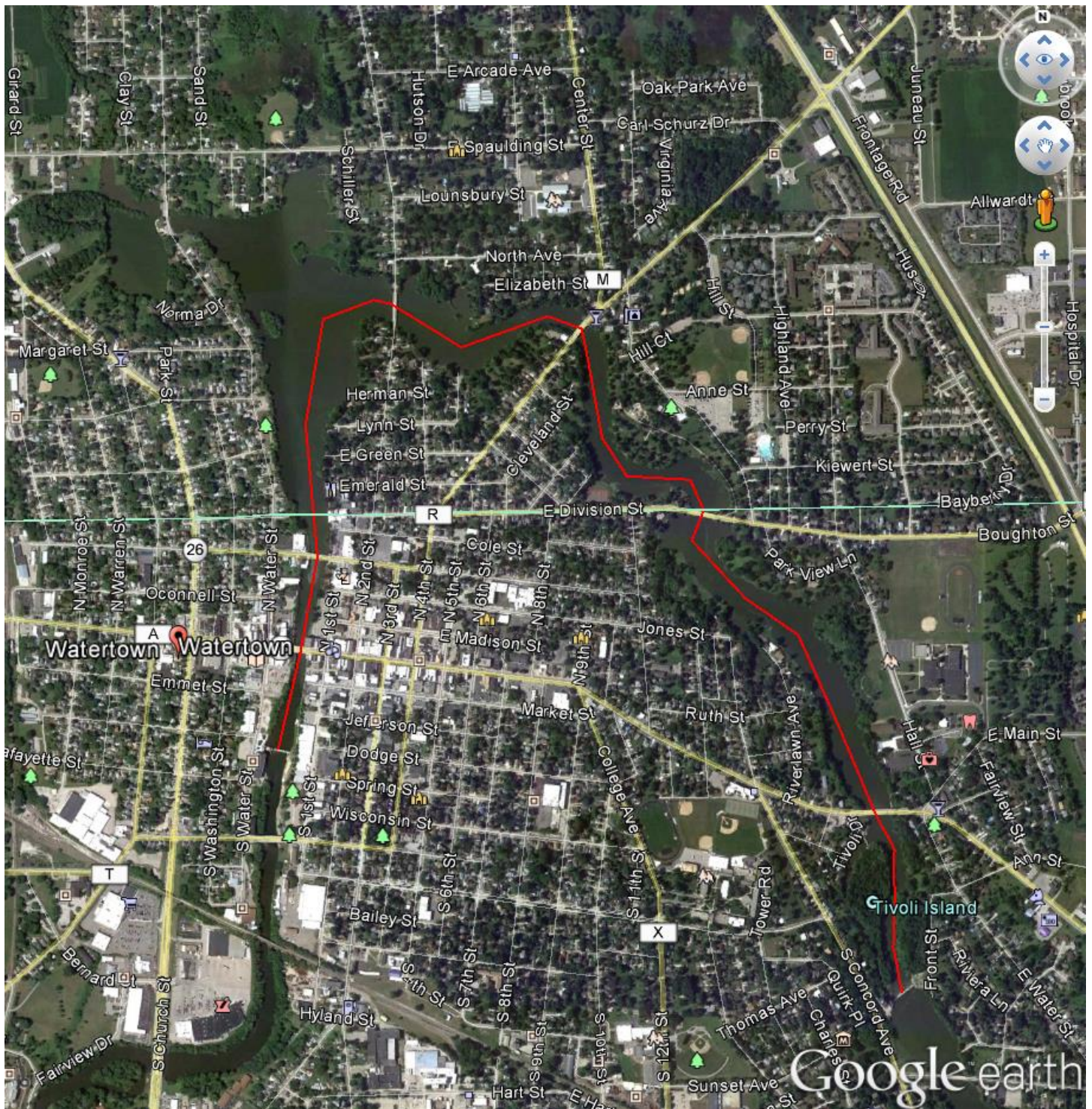


Figure 1: Limits of Drawdown of the Rock River in Watertown, WI (shown in red).