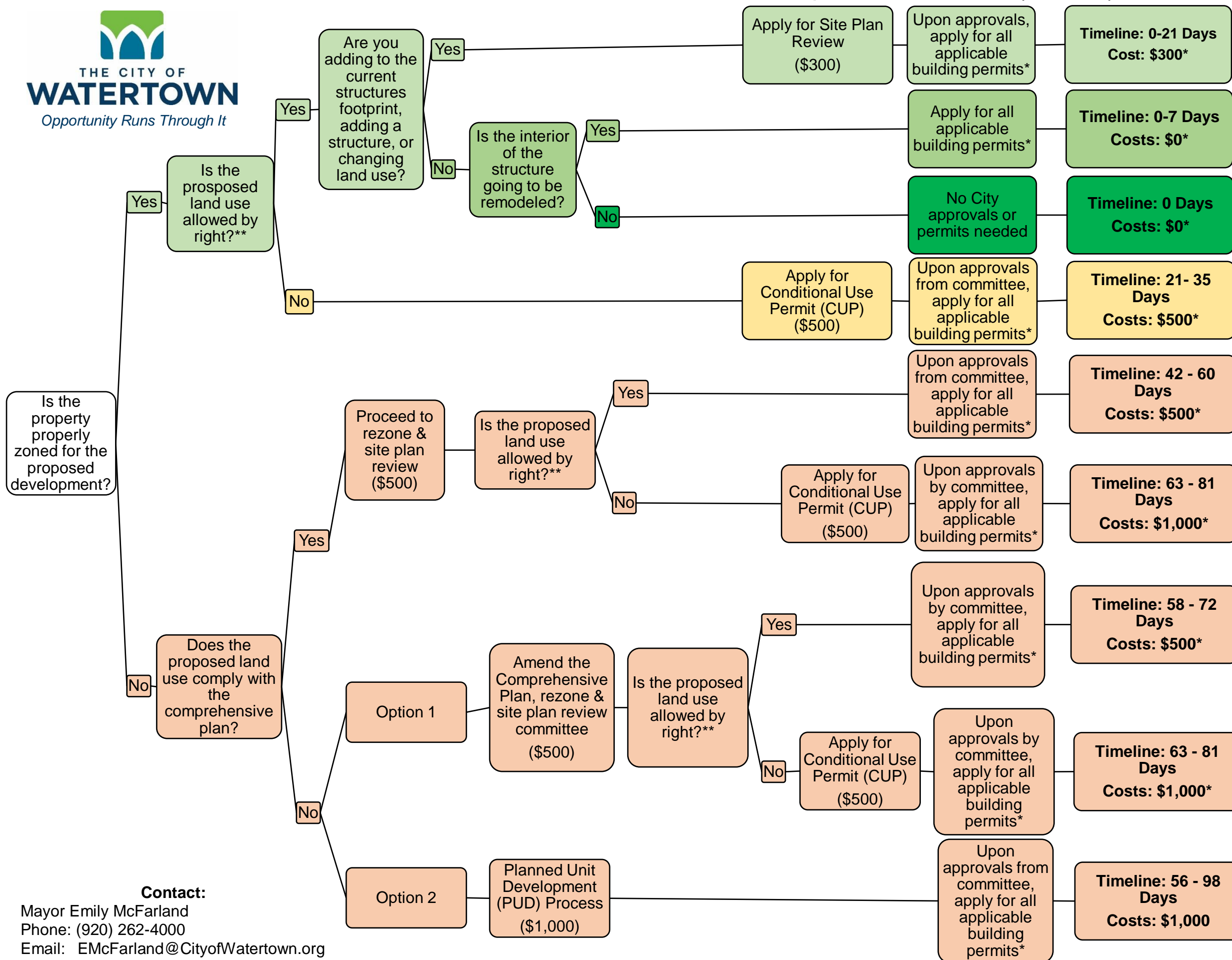




Commercial/Industrial Development Flowchart (CIDFC)



*To apply for applicable **building permits**, use the following link:
http://www.ci.watertown.wi.us/document_centers/building_safety_and_zoning/index.php#revize_document_center_rz123

Plan Commission application:

- Conditional Use Permit
- Rezone
- Planned Unit Development

http://www.ci.watertown.wi.us/departments/building_safety_and_zoning/what_needs_to_be_reviewed_by_the_plan_commission.php#XSeEkutKiUk

Site Plan:
http://www.ci.watertown.wi.us/departments/building_safety_and_zoning/what_needs_to_be_reviewed_by_the_site_plan_review_committee.php#XSeQ-utKiUk

Zoning Map:
http://www.ci.watertown.wi.us/Zoning_Map.pdf

Legend / Key

Green	No Plan Commission or Common Council approvals.
Yellow	Plan Commission approval, no Common Council approval.
Orange	Plan Commission and Common Council approvals.
*	Does not include cost of building/plumbing/electric/HVAC permits.

Contact:
 Mayor Emily McFarland
 Phone: (920) 262-4000
 Email: EMcFarland@CityofWatertown.org

** = Chapter 550, Article II provides each Zoning District's allowed by right land uses.